

# ANNOUNCEMENTS

## BREAKFAST IN BETHLEHEM

*Family Christmas Breakfast*



**Register Now!**

**Saturday, November 30th  
9-11:30am**

Pick up an invitation and  
invite your friends for a  
Family Christmas Breakfast!



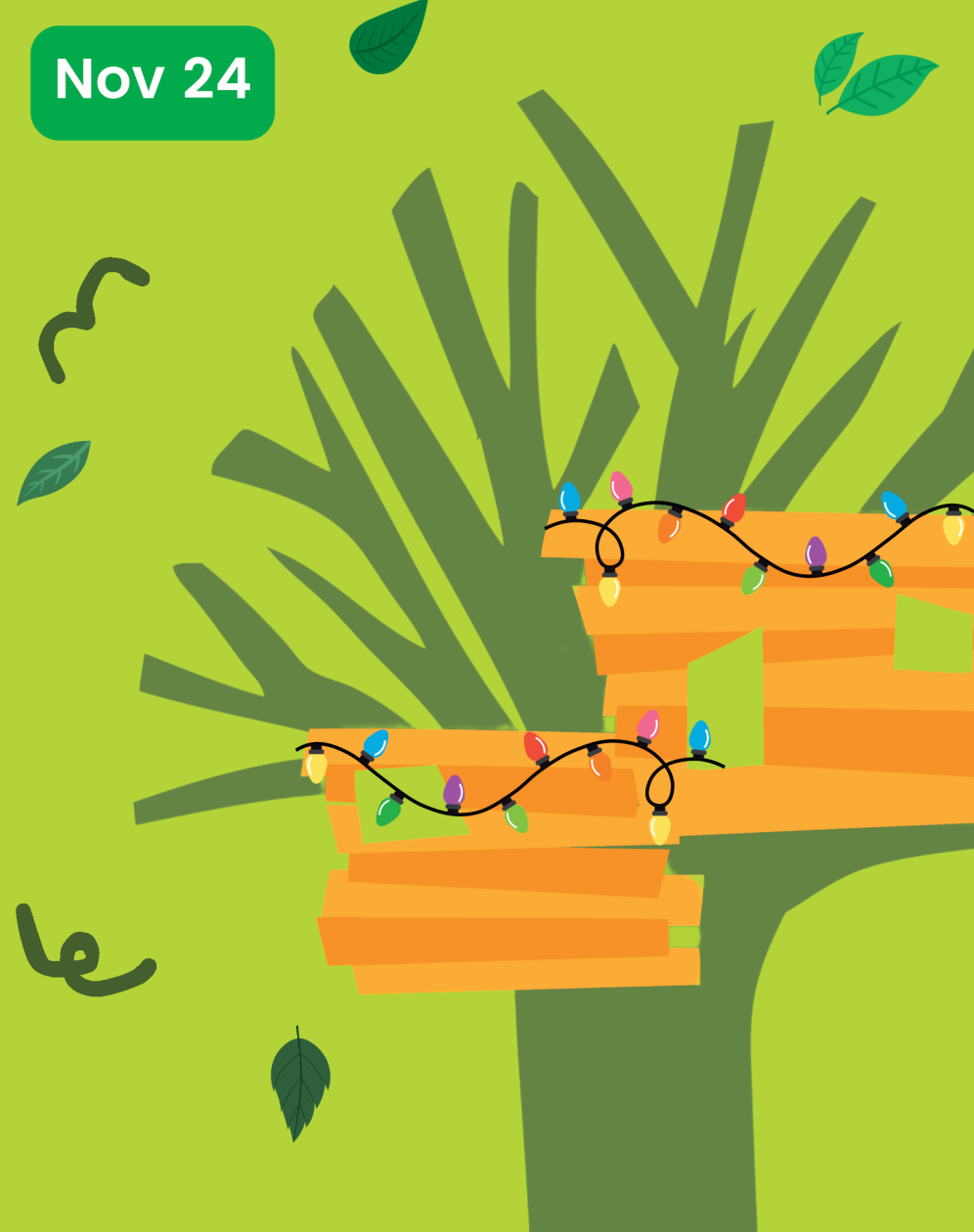
### **Reminder!**

Bring a water bottle if your  
child tends to get thirsty!

**What is this?** Our weekly Clubhouse Connects are a tool to help families connect with their children about faith at home. Feel free to use it as a guide, not instructions. Complete the 3 steps, return your Clubhouse Connects, and you can spin the prize wheel!

# CLUBHOUSE CONNECTS!

**Nov 24**



# Clubhouse Connects

## 1 Connect with Family

- Talk about what we did and learned this week.
- What do you remember from the story?

## 2 Connect with The Word

- Memorize the verse below and recite it to a teacher for a prize!

**Great is our Lord. His power is mighty.**  
**Psalm 147:5**

## 3 Connect with God

- Say the memory verse like you're saying it to God. Tell Him he is great and mighty.
- Thank God that we don't have to be the strongest because He is!

Child's Name: \_\_\_\_\_

Parent Initials: \_\_\_\_\_

**GO!** HOME GUIDE  
NAME: \_\_\_\_\_

### In the space Below...

Draw a praise picture that tells Jesus, "I love you." Say a prayer and tell Him how much you love Him. Remember, God is so, so powerful and He can do anything.

